

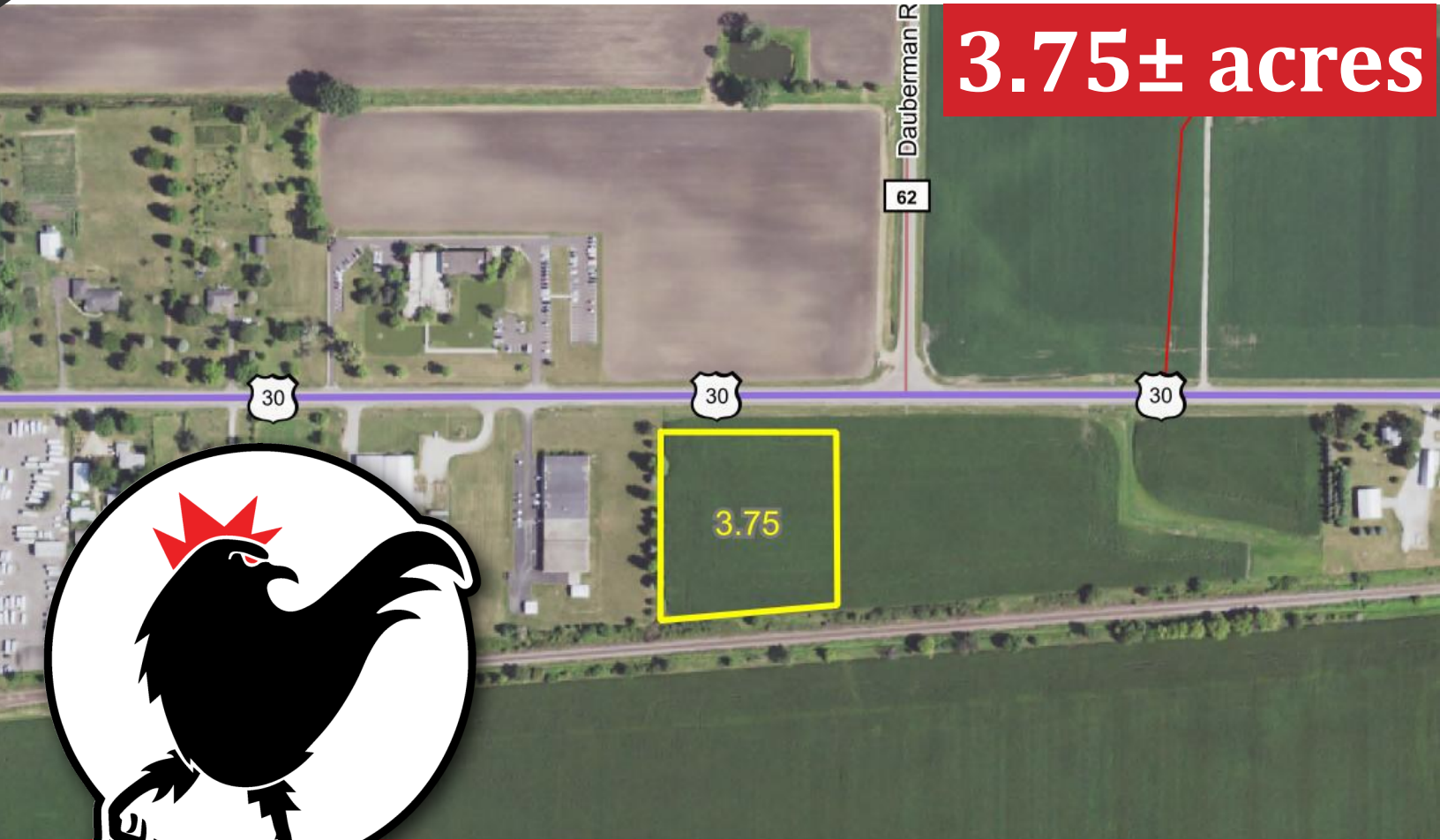


Commercial

R E A L T Y

A Rooster Ag' Realty, Inc. Company

Kane County, IL Big Rock Twp.



3.75± acres

3.75

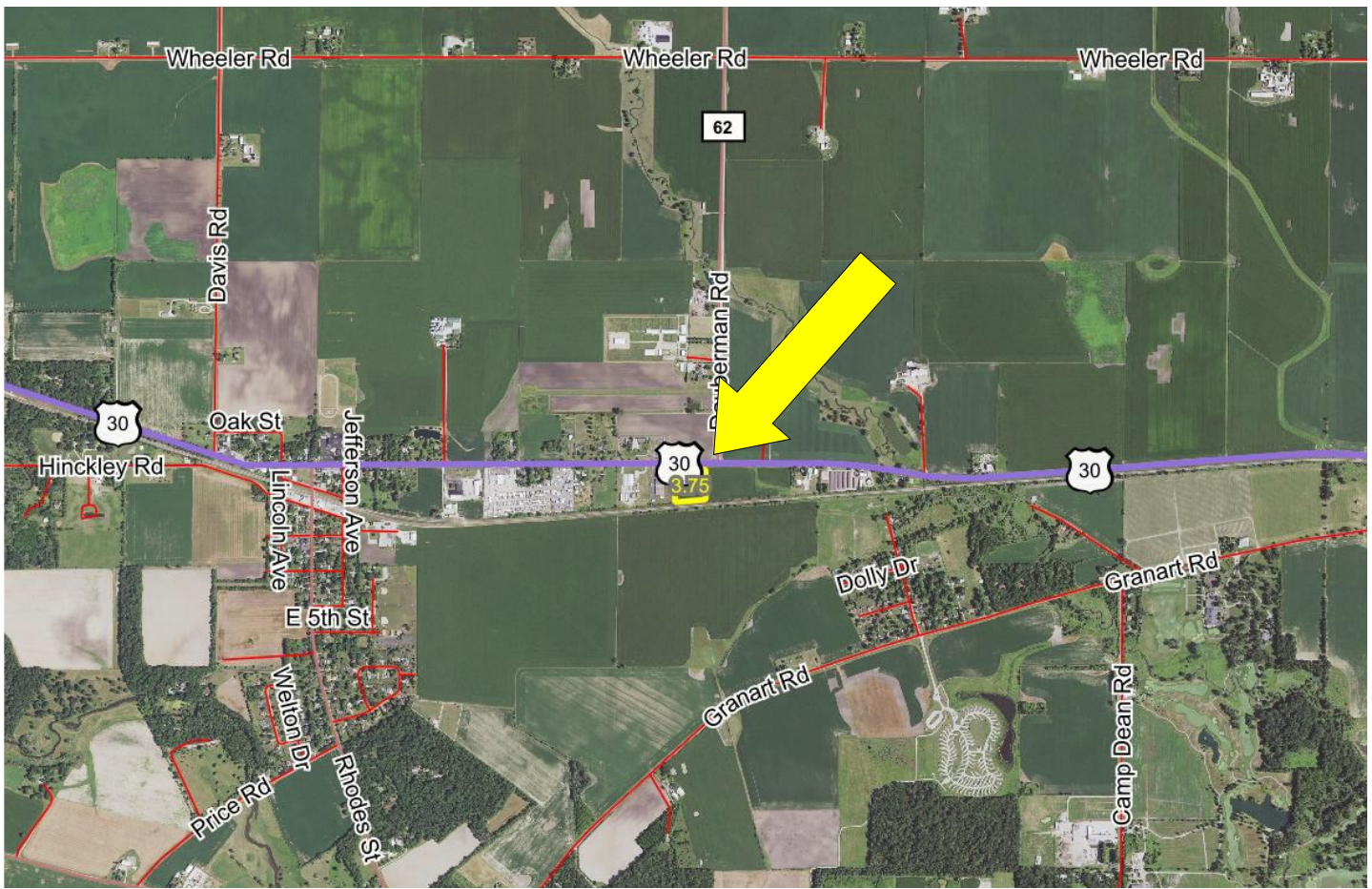


ROOSTER AG' COMMERCIAL REALTY

1100 S. County Line Rd
PO Box 297
Maple Park, IL 60151

DALTON JAHNTZ

Broker
Email: dalton@roosterag.com
Phone: 630.525.1431



About the Property

DEVELOPMENT OPPORTUNITY!

Excellent location at the SWC of Route 30 & the Dauberman Road Extension.

GROSS ACRES:	3.75±
EST. REAL ESTATE TAX:	\$736.62
PRICE:	\$250,000

ROOSTER AG' COMMERCIAL REALTY

1100 S. County Line Rd
PO Box 297
Maple Park, IL 60151



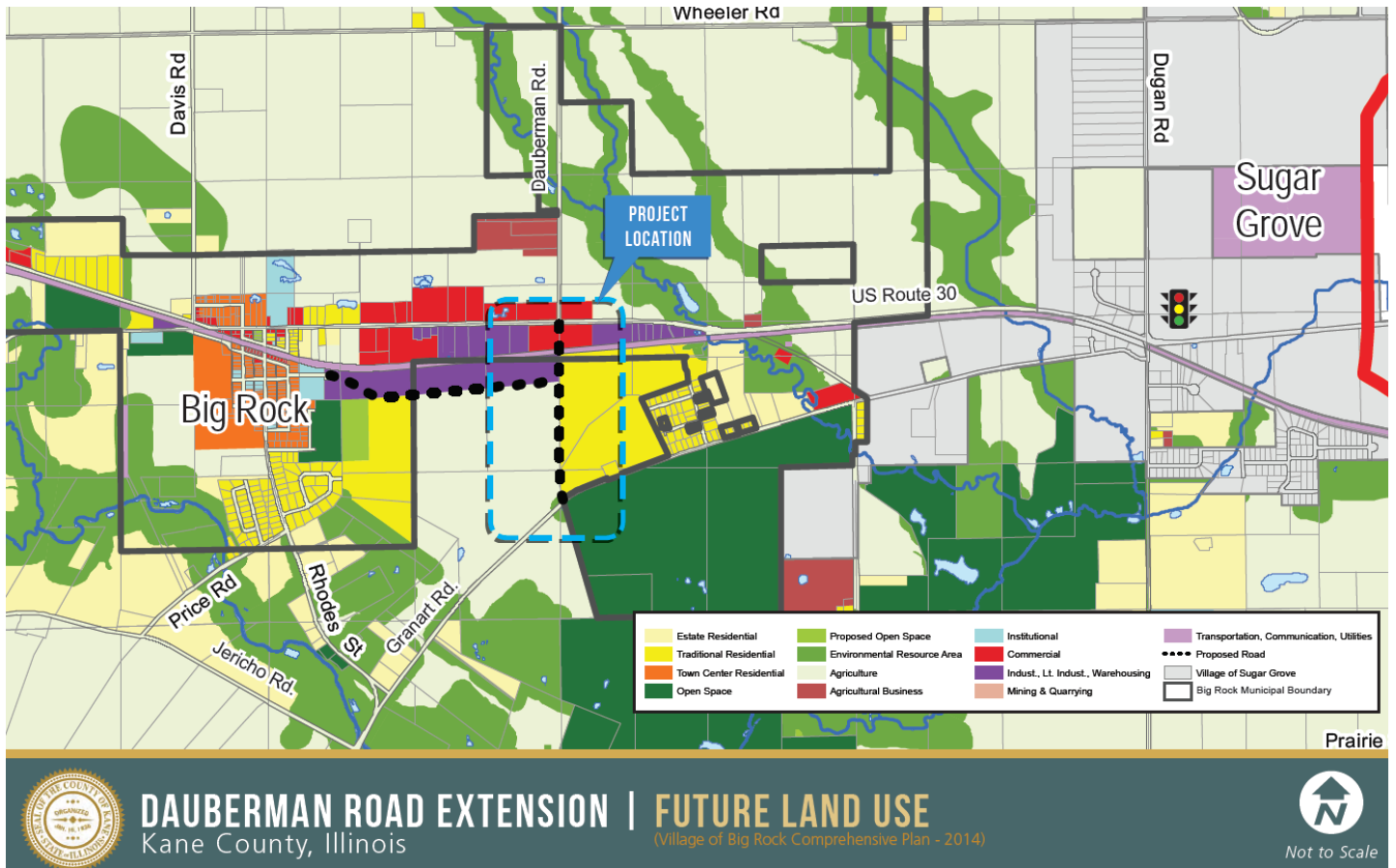
DALTON JAHNTZ

Broker

Email: dalton@roosterag.com

Phone: 630.525.1431

Land Plan



ROOSTER AG' COMMERCIAL REALTY

1100 S. County Line Rd
PO Box 297
Maple Park, IL 60151



DALTON JAHNTZ

Broker

Email: dalton@roosterag.com

Phone: 630.525.1431



©2020 AqriData, Inc.

ROOSTER AG' COMMERCIAL REALTY

1100 S. County Line Rd
PO Box 297
Maple Park, IL 60151

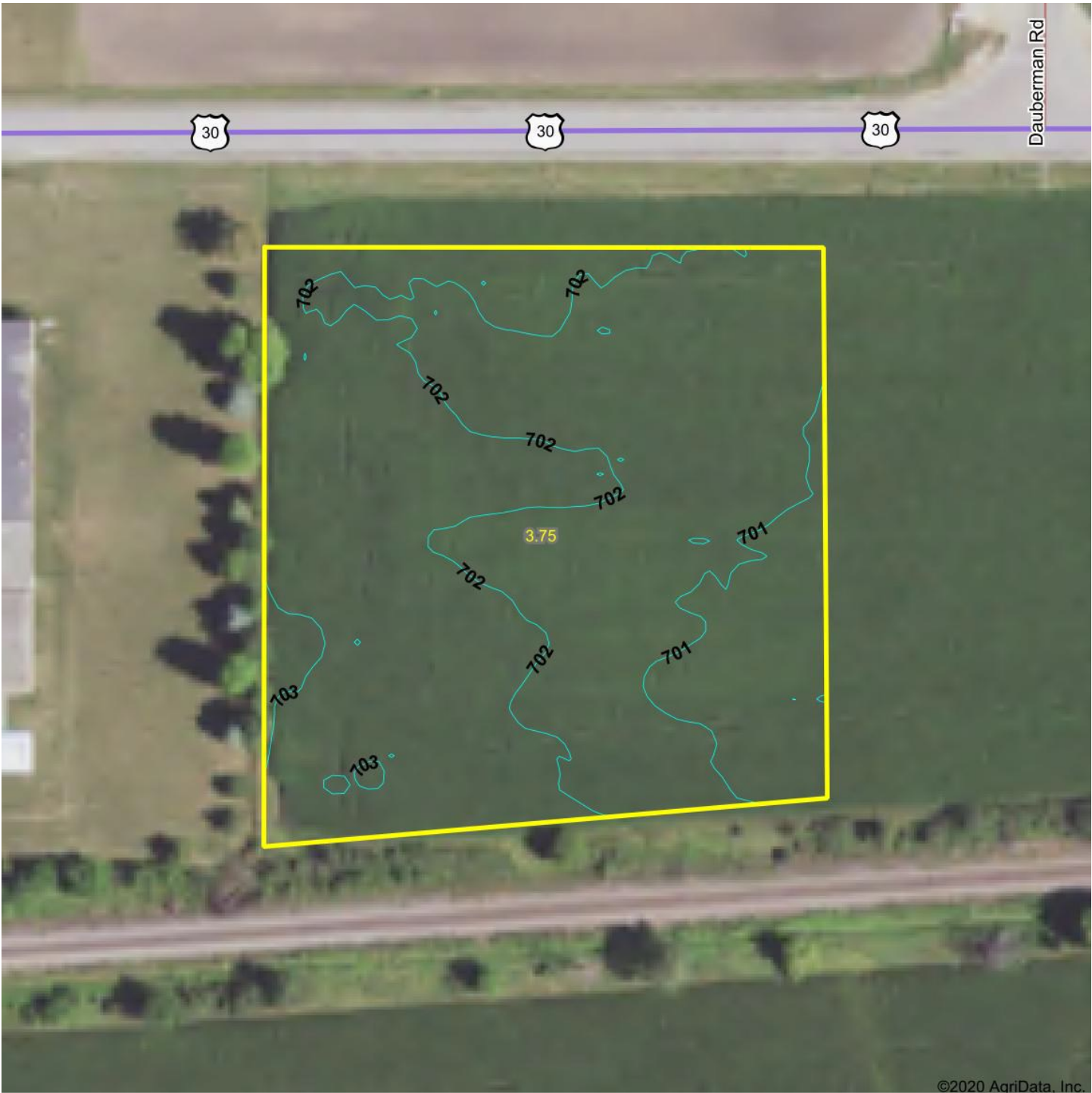


DALTON JAHNTZ

Broker

Email: dalton@roosterag.com

Phone: 630.525.1431



ROOSTER AG' COMMERCIAL REALTY

1100 S. County Line Rd
PO Box 297
Maple Park, IL 60151



DALTON JAHNTZ

Broker
Email: dalton@roosterag.com
Phone: 630.525.1431